

Accessing the Evomics

2015 AMI



Goto:

<http://console.aws.amazon.com>

Sign up for a new account.

Enter your credit card details.

Find: **ami-4e89fa26** under Community AMIs

Launch a “Free Tier”

Look carefully at Pricing Information -

<https://aws.amazon.com/ec2/pricing/>



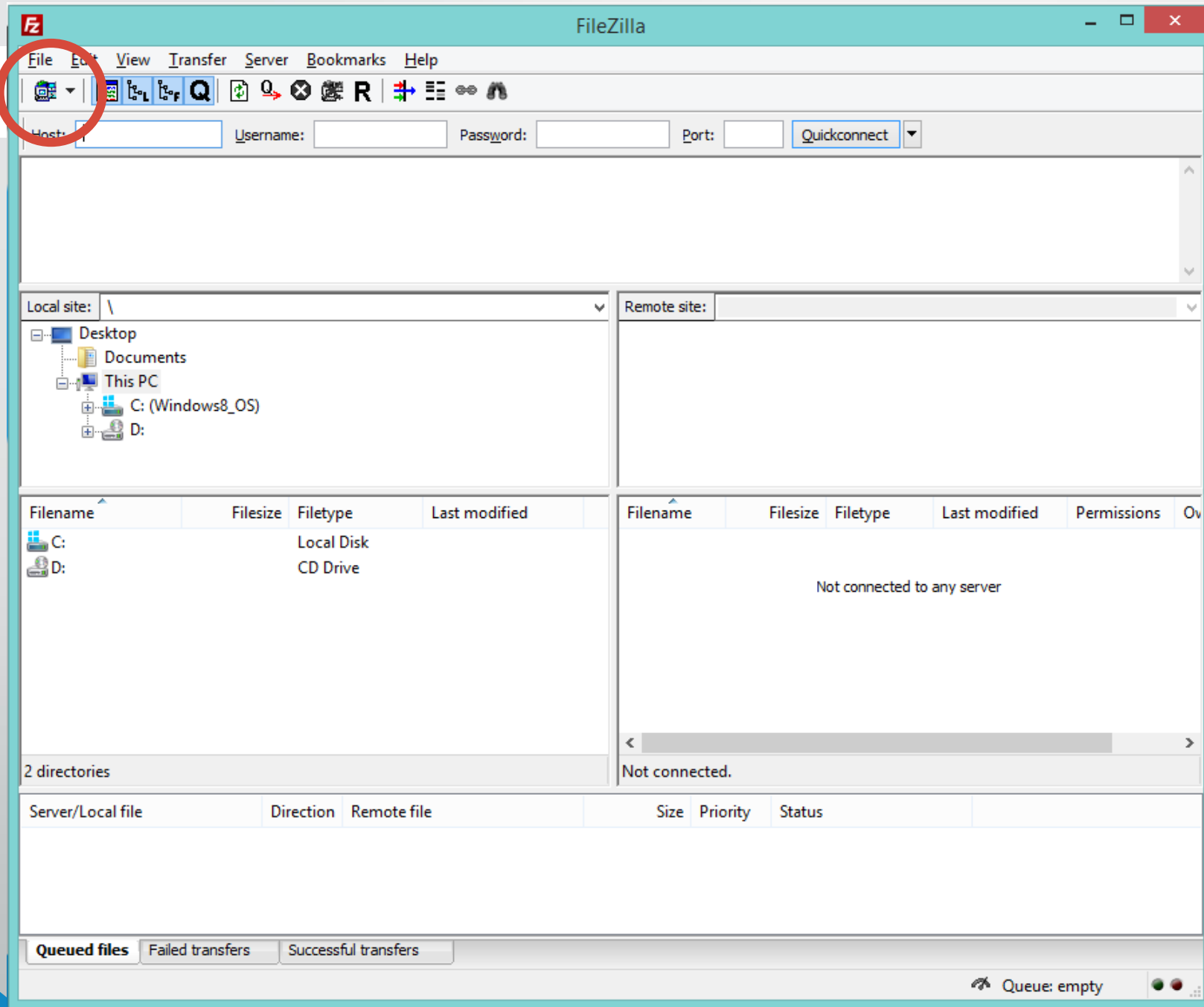
Downloading your Data

From the AMI

Using FileZilla on your Local Machine

- Go to https://filezilla-project.org/download.php?show_all=1
- Download the package for your local machine: e.g. Mac OS X or Windows
- Ubuntu: `sudo apt-get install filezilla`
- Other programs exists: e.g. WinSCP (Win) and Fugu (OS X)
- Install and open the program

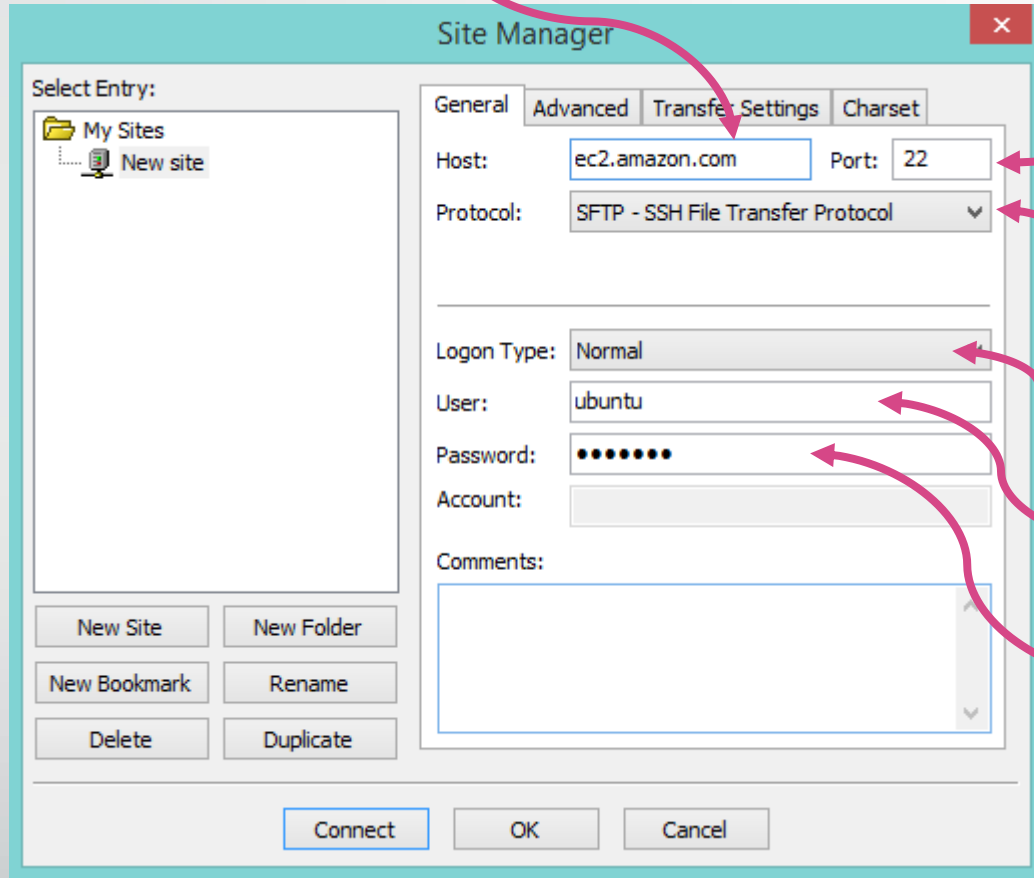
Click here →



The screenshot shows the FileZilla application window. The title bar reads "FileZilla". The menu bar includes "File", "Edit", "View", "Transfer", "Server", "Bookmarks", and "Help". The toolbar contains various icons, with the "Quickconnect" button (represented by a blue square with a white 'Q') circled in red. Below the toolbar are input fields for "Host:", "Username:", "Password:", and "Port:", followed by a "Quickconnect" dropdown menu. The main interface is split into two panes. The left pane, labeled "Local site:", shows a tree view of the local file system with "This PC" expanded to show "C: (Windows8_OS)" and "D:". The right pane, labeled "Remote site:", is empty and contains the text "Not connected to any server". Below the panes are two table views. The left table has columns for "Filename", "Filesize", "Filetype", and "Last modified", with rows for "C:" (Local Disk) and "D:" (CD Drive). The right table has columns for "Filename", "Filesize", "Filetype", "Last modified", "Permissions", and "Ownership", and contains the text "Not connected.". At the bottom, there is a transfer queue table with columns "Server/Local file", "Direction", "Remote file", "Size", "Priority", and "Status". Below this are tabs for "Queued files", "Failed transfers", and "Successful transfers". The status bar at the bottom right shows "Queue: empty" and a small icon.

1. Click "New Site"

2. Enter your "Public DNS" here



3. Change to port "22"

4. Change Protocol to "SFTP"

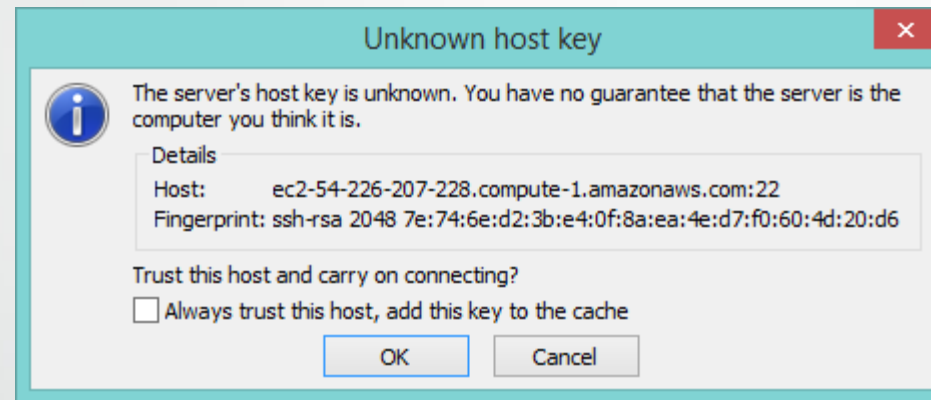
5. Change "Logon Type" to "Normal"

6. Change "User" to "ubuntu"

7. Enter your password. If you didn't change it, it is still "evomics2015"

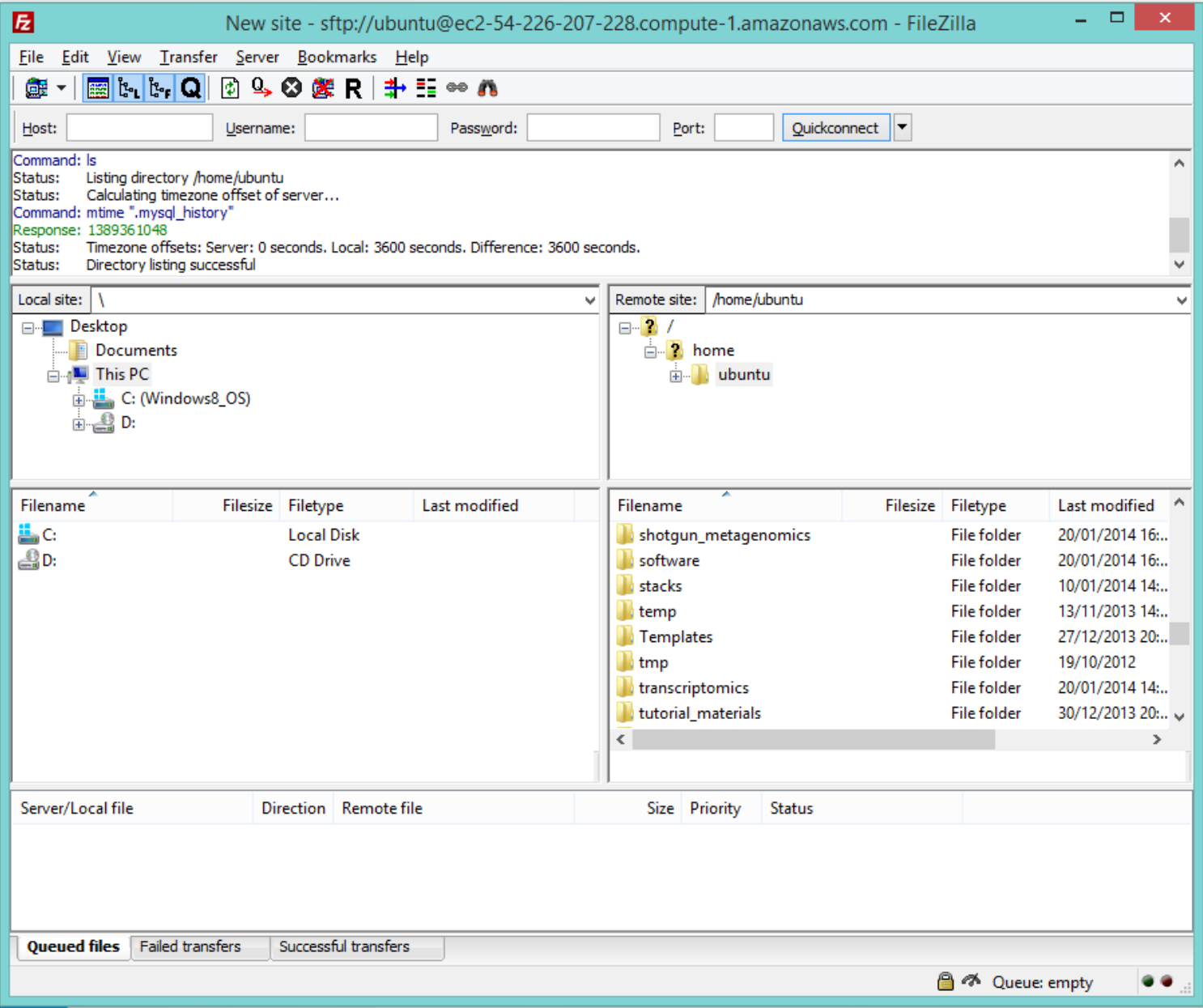
Finally: Click "Connect"

Accept the “Unknown host key” message



- Click, “always trust this host....”
- Click “OK”
- This will only happen once....

- This side shows your LOCAL file system
- Choose a logical folder to save you files.
- You can see a hierarchical list of your directories at the top
- Below that you can see the contents of any folder



- This side shows your REMOTE file system (your files on the AMI)
- Similarly you see your folder structure and files
- Right-click (command/secondary click) on a folder or file and select download.
- It will appear in the bottom window (queue) and download to your local computer.